

- ✓ COMFORT
- ✓ DURABILITY
- ✓ PASSIVE COOLING
- ✓ ENERGY EFFICIENCY

Highly reflective fluoropolymer coating:

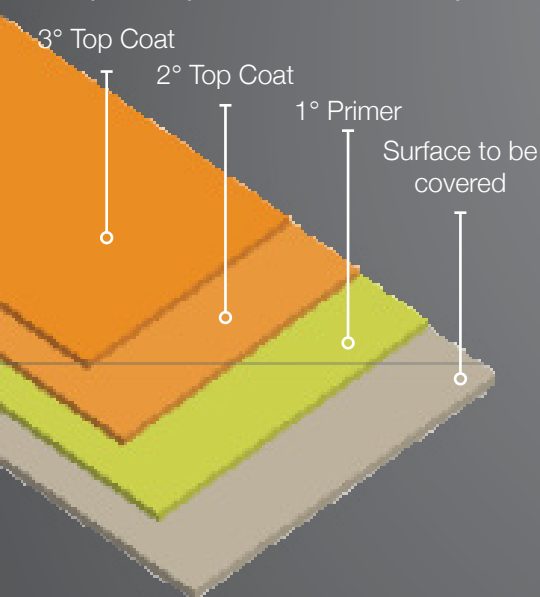
The combination of protection and reflection properties gives life to the Serisolar ProfleXum concept, a fluoropolymer coating. It drastically reduces the temperature of the roof, passively insulating the internal environment of the home/office.

In combination with photovoltaic systems, it optimizes energy production and significantly reduces the demand for electricity to cool the rooms below, reducing the temperature of the internal air.

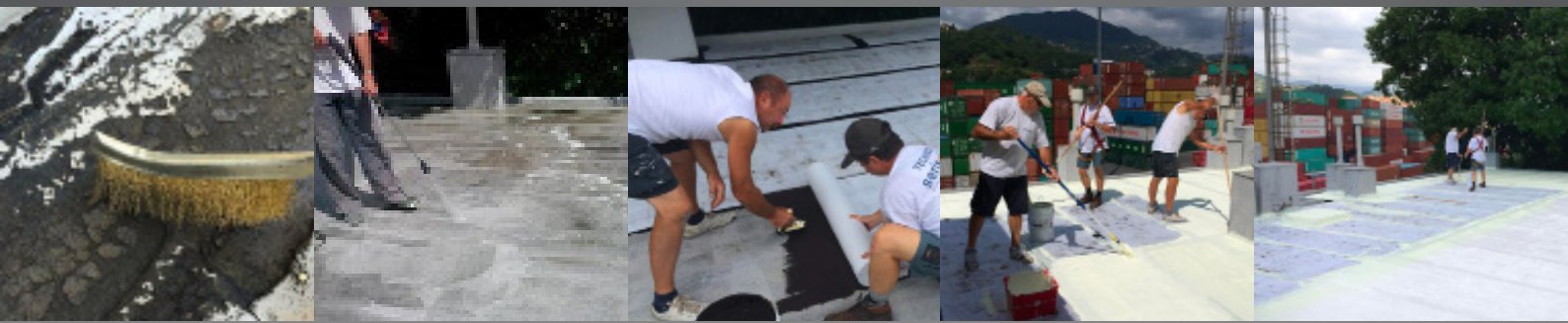
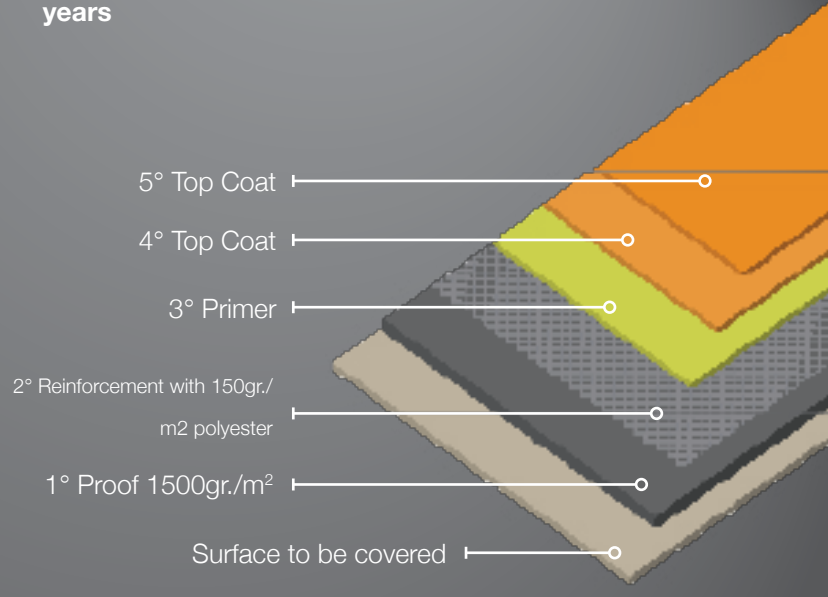
It also significantly improves the energy efficiency of heat pumps in cooling mode.

In addition to the advantages mentioned, it also acts as a protection for the roof itself, increases its durability over time, and eliminates maintenance; The Serisolar ProfleXum coating has an average useful life of over 25 years.

Serisolar ProfleXum reflects solar energy and passively cools the roof for 25 years



Serisolar ProfleXum with the addition of the Proof I.C. package guarantees the waterproofing of your roof for 15 years



Technical data:	
Reflectance:	92%
Infrared emissivity:	89%
Aged infrared emissivity:	88%
SRI (Solar Reflection Index):	113
SRI aged (accelerated aging)	110
Composition based on fluoropolymers	
Vapour permeability	
Resistance to corrosion from atmospheric agents	
Characteristics of non-adhesion to dirt, grease, oil	
15-year warranty, expected duration up to 25 years	

Fire behaviour test conducted by the accredited laboratory according to DIN EN ISO 11925-2 and the related DIN EN13501-1 for the classification of materials. In detail:

DIN EN 13501-1 The coating meets the European fire "class E". The material is shown to be not susceptible to fire and not combustible. The coating is certified according to the international standard DIN EN ISO 11925-2 which provides for the non-fall of inflamed parts

Technical endurance test:

Certification by the accredited laboratory COT (Oil&Gas applications) for the following tests:

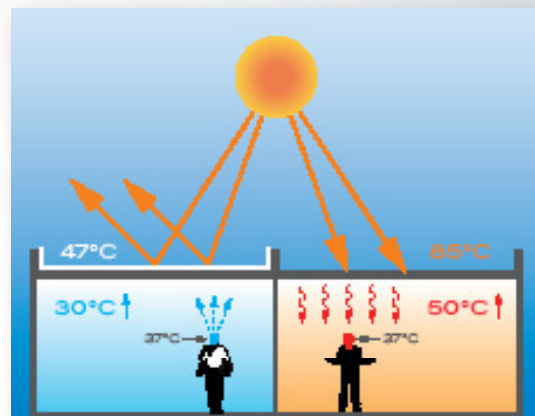
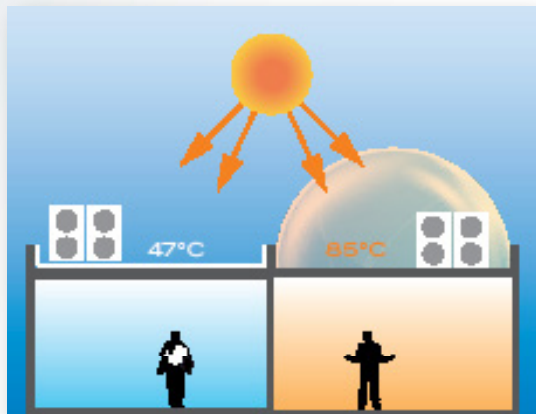
- cycling test: 1000 hours QUV according to ISO 11507 standard
- salt test according to ISO 9227 / ASTM B117
- adhesion test by pull-off method (ASTM D4541/ISO4624)

Passive cooling = “cool roof” concept

The characteristics of a roof surface play a crucial role in the microclimate of the building.

Traditional roof surfaces, such as bituminous membranes, reach temperatures above 80°C when exposed to direct solar radiation, with the main consequence that it is impossible to create a pleasant working environment.

Serisolar ProfileXum drastically reduces the temperature on the roof surface up to max 40-45°C, producing effective passive cooling.



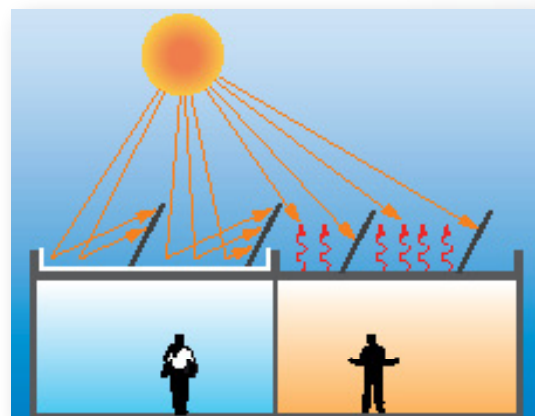
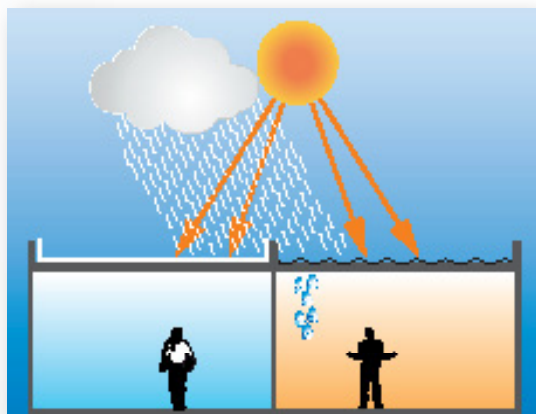
Optimizing the efficiency of heat pumps

In summer, the roof surface is exposed to direct solar radiation, where a particularly hot zone (heat island) is created, characterized by significantly higher air temperatures than the surrounding environment. A heat pump installed on a bituminous roof has a much higher operating temperature than would be achieved with the Serisolar ProfileXum coating. Already with a temperature reduction of just 10°C, a significant increase in heat pump efficiency of approx. 40% is achieved in cooling mode.

Increased productivity of photovoltaic systems

It is known that the efficiency of conversion of light into electricity of a photovoltaic system is compromised by the high temperatures of the photovoltaic modules themselves. By treating the surrounding surface with Serisolar ProfileXum, the following advantages of increased efficiency of photovoltaic modules will be obtained thanks to:

- lower roof temperature
- increased direct and indirect radiation
- increased winter solar radiation



The roof..... and the protection of buildings

The roof has the function of protecting the building from rain, wind and snow. To maintain this performance, it is necessary to reduce UV radiation, the influence of meteorological factors and the tensions of the construction, factors that gradually lead to the degradation of the material. The protective and easyclean action of Serisolar ProfileXum, and the drastic reduction of summer thermal shocks, the cause of continuous and sudden expansions and shrinkages, extends the life of bitumen roofs and sheet metal coverings by 20-25 years.

SERISOLAR Srl - Sb

Sede:
Via Kempten 28
38121 Trento (TN)
+39 0461 950065
info@serisolar.com

Filiale:
Via Gaetano Donizetti 9
20333 Solaro (MI)
+39 02 9968 2861
infomilano@serisolar.com

www.serisolar.com
C.F. e P.IVA
IT01765260227
Reg. Imprese TN
Cap. Soc. €150.000,00 i.v.
Iscr. REA 1757941

serisolar
LET'S MAKE IT SUSTAINABLE